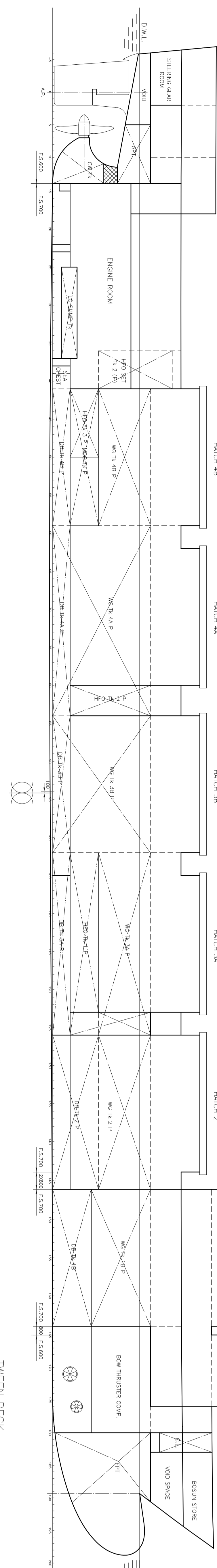
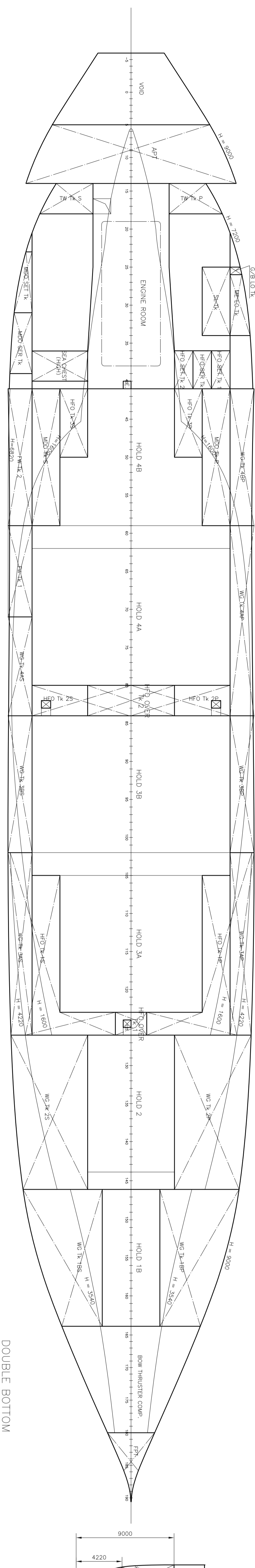


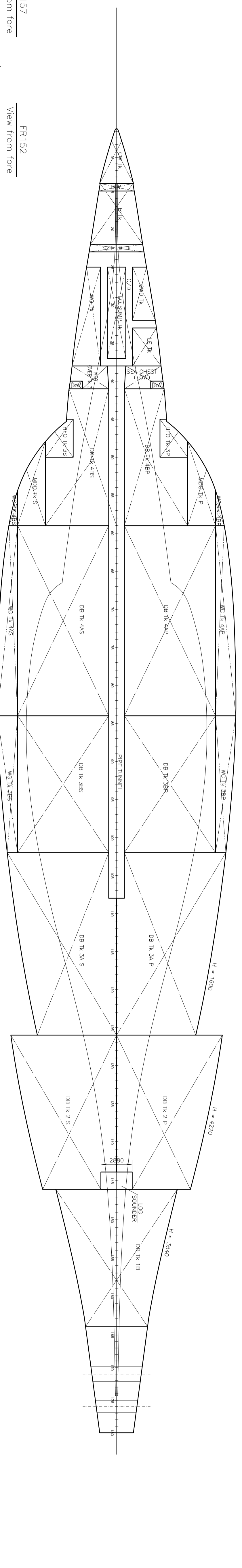
SECTION IN CENTER LINE



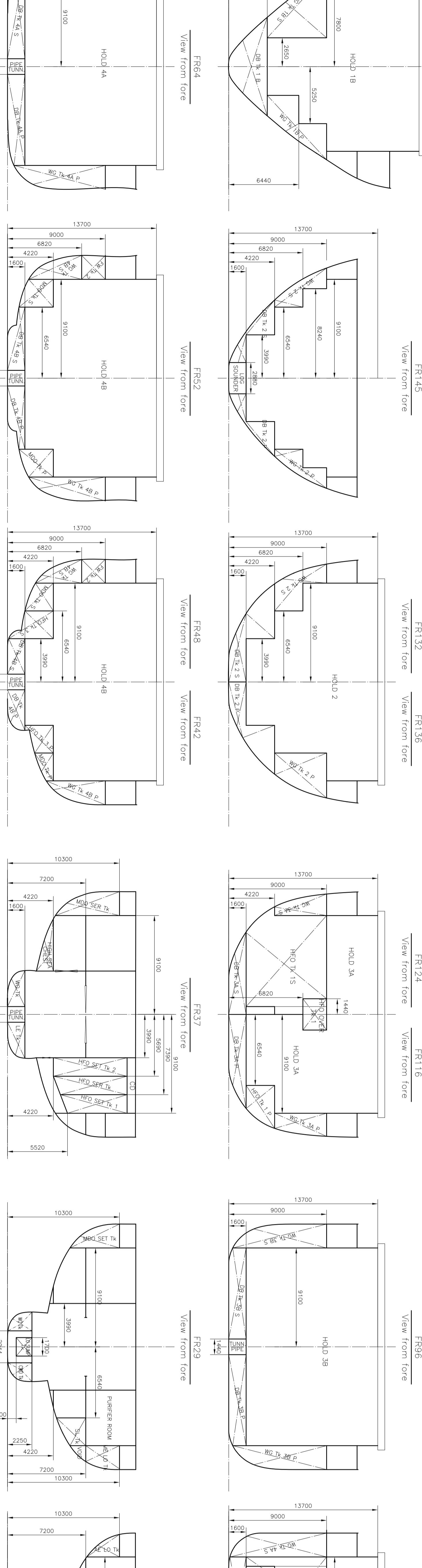
TWEEN DECK



DOUBLE BOTTOM



TWEEN DECK



PRINCIPAL PARTICULARS

LENGTH O.A. 139.10 m
 LENGTH B.P. 129.00 m
 BREADTH M.D. 22.60 m
 DEPTH MLD. 11.80 m
 GRAFT DESIGN/SCANTLING 8.00/8.80 m
 DEADWEIGHT (DESIGN/SCANTLING) 401,9500 /115000 m.t.

REMARKS
 The name is to be used in all drawings and documents.

View from fore

View from fore

View from fore

View from fore

NO.	SHORT NAME	FULL NAME	LOCATION	NO.	UNIT	WEIGHT		CAPACITY	
						(TON)	(KG)	(M ³)	(M ³)
1	FRP	Fiber Reinforced Plastic	1700	10.0	10.0	1000	1000		
2	DBM 1B	Double Bottom Tank No.1B	148+164	188.3	188.3	188.3	188.3		
3	DBM 2B	Double Bottom Tank No.2B	148+164	188.3	188.3	188.3	188.3		
4	DBM 3B	Double Bottom Tank No.3B	148+164	188.3	188.3	188.3	188.3		
5	DBM 4B	Double Bottom Tank No.4B	148+164	188.3	188.3	188.3	188.3		
6	DBM 5B	Double Bottom Tank No.5B	148+164	188.3	188.3	188.3	188.3		
7	DBM 6B	Double Bottom Tank No.6B	148+164	188.3	188.3	188.3	188.3		
8	DBM 7B	Double Bottom Tank No.7B	148+164	188.3	188.3	188.3	188.3		
9	DBM 8B	Double Bottom Tank No.8B	148+164	188.3	188.3	188.3	188.3		
10	DBM 9B	Double Bottom Tank No.9B	148+164	188.3	188.3	188.3	188.3		
11	DBM 10B	Double Bottom Tank No.10B	148+164	188.3	188.3	188.3	188.3		
12	DBM 11B	Double Bottom Tank No.11B	148+164	188.3	188.3	188.3	188.3		
13	DBM 12B	Double Bottom Tank No.12B	148+164	188.3	188.3	188.3	188.3		
14	DBM 13B	Double Bottom Tank No.13B	148+164	188.3	188.3	188.3	188.3		
15	DBM 14B	Double Bottom Tank No.14B	148+164	188.3	188.3	188.3	188.3		
16	DBM 15B	Double Bottom Tank No.15B	148+164	188.3	188.3	188.3	188.3		
17	DBM 16B	Double Bottom Tank No.16B	148+164	188.3	188.3	188.3	188.3		
18	DBM 17B	Double Bottom Tank No.17B	148+164	188.3	188.3	188.3	188.3		
19	DBM 18B	Double Bottom Tank No.18B	148+164	188.3	188.3	188.3	188.3		
20	DBM 19B	Double Bottom Tank No.19B	148+164	188.3	188.3	188.3	188.3		
21	DBM 20B	Double Bottom Tank No.20B	148+164	188.3	188.3	188.3	188.3		
22	DBM 21B	Double Bottom Tank No.21B	148+164	188.3	188.3	188.3	188.3		
23	DBM 22B	Double Bottom Tank No.22B	148+164	188.3	188.3	188.3	188.3		
24	DBM 23B	Double Bottom Tank No.23B	148+164	188.3	188.3	188.3	188.3		
25	DBM 24B	Double Bottom Tank No.24B	148+164	188.3	188.3	188.3	188.3		
26	DBM 25B	Double Bottom Tank No.25B	148+164	188.3	188.3	188.3	188.3		
27	DBM 26B	Double Bottom Tank No.26B	148+164	188.3	188.3	188.3	188.3		
28	DBM 27B	Double Bottom Tank No.27B	148+164	188.3	188.3	188.3	188.3		
29	DBM 28B	Double Bottom Tank No.28B	148+164	188.3	188.3	188.3	188.3		
30	DBM 29B	Double Bottom Tank No.29B	148+164	188.3	188.3	188.3	188.3		
31	DBM 30B	Double Bottom Tank No.30B	148+164	188.3	188.3	188.3	188.3		
32	DBM 31B	Double Bottom Tank No.31B	148+164	188.3	188.3	188.3	188.3		
33	DBM 32B	Double Bottom Tank No.32B	148+164	188.3	188.3	188.3	188.3		
34	DBM 33B	Double Bottom Tank No.33B	148+164	188.3	188.3	188.3	188.3		
35	DBM 34B	Double Bottom Tank No.34B	148+164	188.3	188.3	188.3	188.3		
36	DBM 35B	Double Bottom Tank No.35B	148+164	188.3	188.3	188.3	188.3		
37	DBM 36B	Double Bottom Tank No.36B	148+164	188.3	188.3	188.3	188.3		
38	DBM 37B	Double Bottom Tank No.37B	148+164	188.3	188.3	188.3	188.3		
39	DBM 38B	Double Bottom Tank No.38B	148+164	188.3	188.3	188.3	188.3		
40	DBM 39B	Double Bottom Tank No.39B	148+164	188.3	188.3	188.3	188.3		
41	DBM 40B	Double Bottom Tank No.40B	148+164	188.3	188.3	188.3	188.3		
42	DBM 41B	Double Bottom Tank No.41B	148+164	188.3	188.3	188.3	188.3		
43	DBM 42B	Double Bottom Tank No.42B	148+164	188.3	188.3	188.3	188.3		
44	DBM 43B	Double Bottom Tank No.43B	148+164	188.3	188.3	188.3	188.3		
45	DBM 44B	Double Bottom Tank No.44B	148+164	188.3	188.3	188.3	188.3		
46	DBM 45B	Double Bottom Tank No.45B	148+164	188.3	188.3	188.3	188.3		
47	DBM 46B	Double Bottom Tank No.46B	148+164	188.3	188.3	188.3	188.3		
48	DBM 47B	Double Bottom Tank No.47B	148+164	188.3	188.3	188.3	188.3		
49	DBM 48B	Double Bottom Tank No.48B	148+164	188.3	188.3	188.3	188.3		
50	DBM 49B	Double Bottom Tank No.49B	148+164	188.3	188.3	188.3	188.3		
51	DBM 50B	Double Bottom Tank No.50B	148+164	188.3	188.3	188.3	188.3		
52	DBM 51B	Double Bottom Tank No.51B	148+164	188.3	188.3	188.3	188.3		
53	DBM 52B	Double Bottom Tank No.52B	148+164	188.3	188.3	188.3	188.3		
54	DBM 53B	Double Bottom Tank No.53B	148+164	188.3	188.3	188.3	188.3		
55	DBM 54B	Double Bottom Tank No.54B	148+164	188.3	188.3	188.3	188.3		
56	DBM 55B	Double Bottom Tank No.55B	148+164	188.3	188.3	188.3	188.3		
57	DBM 56B	Double Bottom Tank No.56B	148+164	188.3	188.3	188.3	188.3		
58	DBM 57B	Double Bottom Tank No.57B	148+164	188.3	188.3	188.3	188.3		
59	DBM 58B	Double Bottom Tank No.58B	148+164	188.3	188.3	188.3	188.3		
60	DBM 59B	Double Bottom Tank No.59B	148+164	188.3	188.3	188.3	188.3		
61	DBM 60B	Double Bottom Tank No.60B	148+164	188.3	188.3	188.3	188.3		
62	DBM 61B	Double Bottom Tank No.61B	148+164	188.3	188.3	188.3	188.3		
63	DBM 62B	Double Bottom Tank No.62B	148+164	188.3	188.3	188.3	188.3		
64	DBM 63B	Double Bottom Tank No.63B	148+164	188.3	188.3	188.3	188.3		
65	DBM 64B	Double Bottom Tank No.64B	148+164	188.3	188.3	188.3	188.3		
66	DBM 65B	Double Bottom Tank No.65B	148+164	188.3	188.3	188.3	188.3		
67	DBM 66B	Double Bottom Tank No.66B	148+164	188.3	188.3	188.3	188.3		
68	DBM 67B	Double Bottom Tank No.67B	148+164	188.3	188.3	188.3	188.3		
69	DBM 68B	Double Bottom Tank No.68B	148+164	188.3	188.3	188.3	188.3		
70	DBM 69B	Double Bottom Tank No.69B	148+164	188.3	188.3	188.3	188.3		
71	DBM 70B	Double Bottom Tank No.70B	148+164	188.3	188.3	188.3	188.3		
72	DBM 71B	Double Bottom Tank No.71B	148+164	188.3	188.3	188.3	188.3		
73	DBM 72B	Double Bottom Tank No.72B	148+164	188.3	188.3	188.3	188.3		
74	DBM 73B	Double Bottom Tank No.73B	148+164	188.3	188.3	188.3	188.3		
75	DBM 74B	Double Bottom Tank No.74B	148+164	188.3	188.3	188.3	188.3		
76	DBM 75B	Double Bottom Tank No.75B	148+164	188.3	188.3	188.3	188.3		
77	DBM 76B	Double Bottom Tank No.76B	148+164	188.3	188.3	188.3	188.3		
78	DBM 77B	Double Bottom Tank No.77B	148+164	188.3	188.3	188.3	188.3		
79	DBM 78B	Double Bottom Tank No.78B	148+164	188.3	188.3	188.3	188.3		
80	DBM 79B	Double Bottom Tank No.79B	148+164	188.3	188.3	188.3	188.3		
81	DBM 80B	Double Bottom Tank No.80B	148+164	188.3	188.3	188.3	188.3		
82	DBM 81B	Double Bottom Tank No.81B	148+164	188.3	188.3	188.3	188.3		
83	DBM 82B	Double Bottom Tank No.82B	148+164	188.3	188.3	188.3	188.3		
84	DBM 83B	Double Bottom Tank No.83B	148+164	188.3	188.3	188.3	188.3		
85	DBM 84B	Double Bottom Tank No.84B	148+164	188.3	188.3	188.3	188.3		
86	DBM 85B	Double Bottom Tank No.85B	148+164	188.3	188.3	188.3	188.3		
87	DBM 86B	Double Bottom Tank No.86B	148+164	188.3	188.3	188.3	188.3		
88	DBM 87B	Double Bottom Tank No.87B	148+164	188.3	188.3	188.3	188.3		
89	DBM 88B	Double Bottom Tank No.88B	148+164	188.3	188.3	188.3	188.3		
90	DBM 89B	Double Bottom Tank No.89B	148+164	188.3	188.3	188.3	188.3		
91	DBM 90B	Double Bottom Tank No.90B	148+164	188.3	188.3	188.3	188.3		